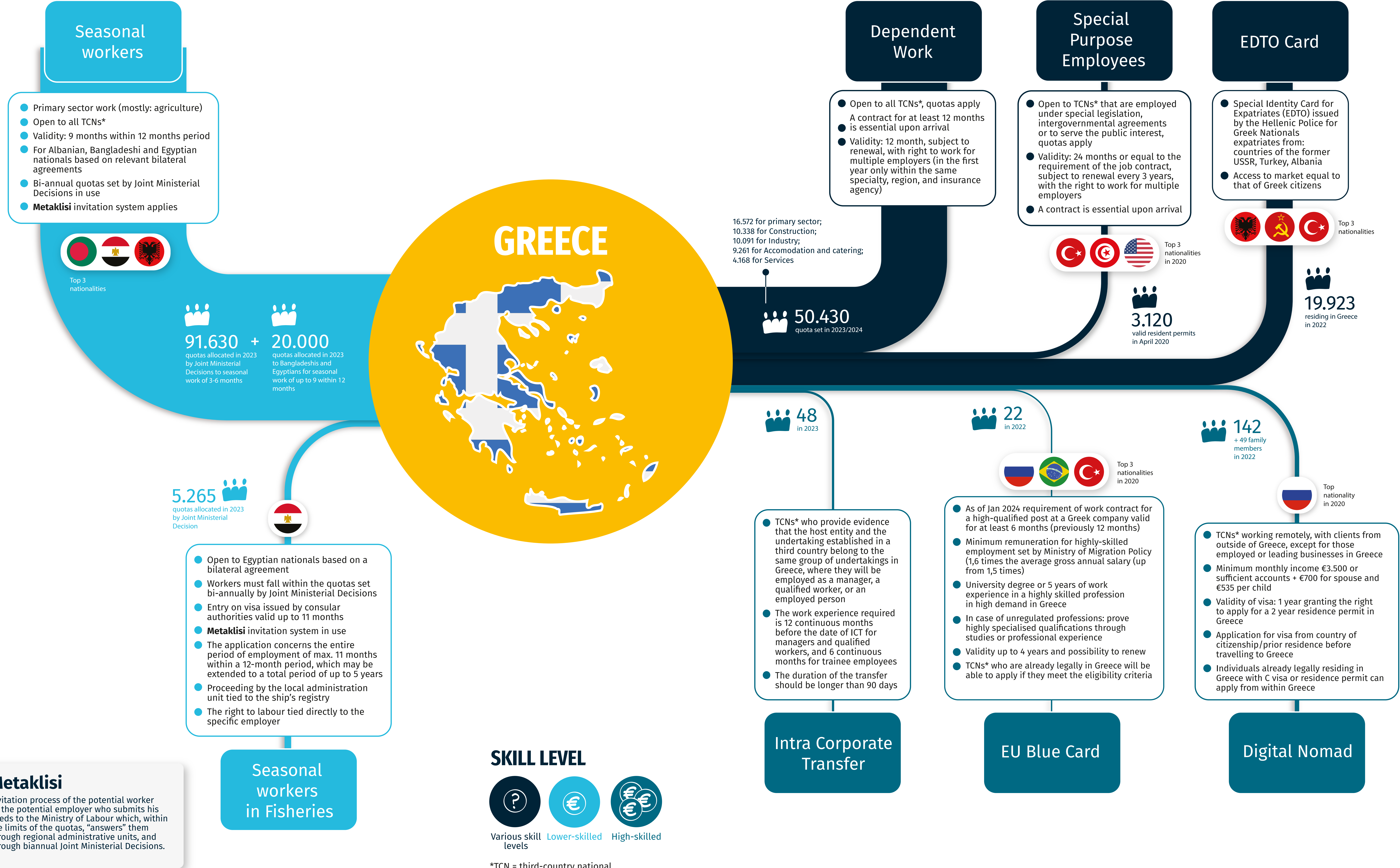


LABOUR MIGRATION & MOBILITY PATHWAYS TOWARDS...



This infographic summarises findings from MPE (2024), *Re-thinking approaches to labour migration. Potentials and gaps in EU member states' migration infrastructures*. Case Study: Greece, Brussels: ICMPD. This publication was funded by the European Union and commissioned through the Migration Partnership Facility. Its contents are the sole responsibility of the author and do not necessarily reflect the views of the European Union nor ICMPD. NB: Pathway data is provided for the years indicated where numbers are available. Lack of a number implies that data is not publicly available and the author of the report was not able to access data per pathway otherwise. The infographic represents the labour migration pathways as of February 2024, changes thereafter may not be reflected. © ICMPD 2024