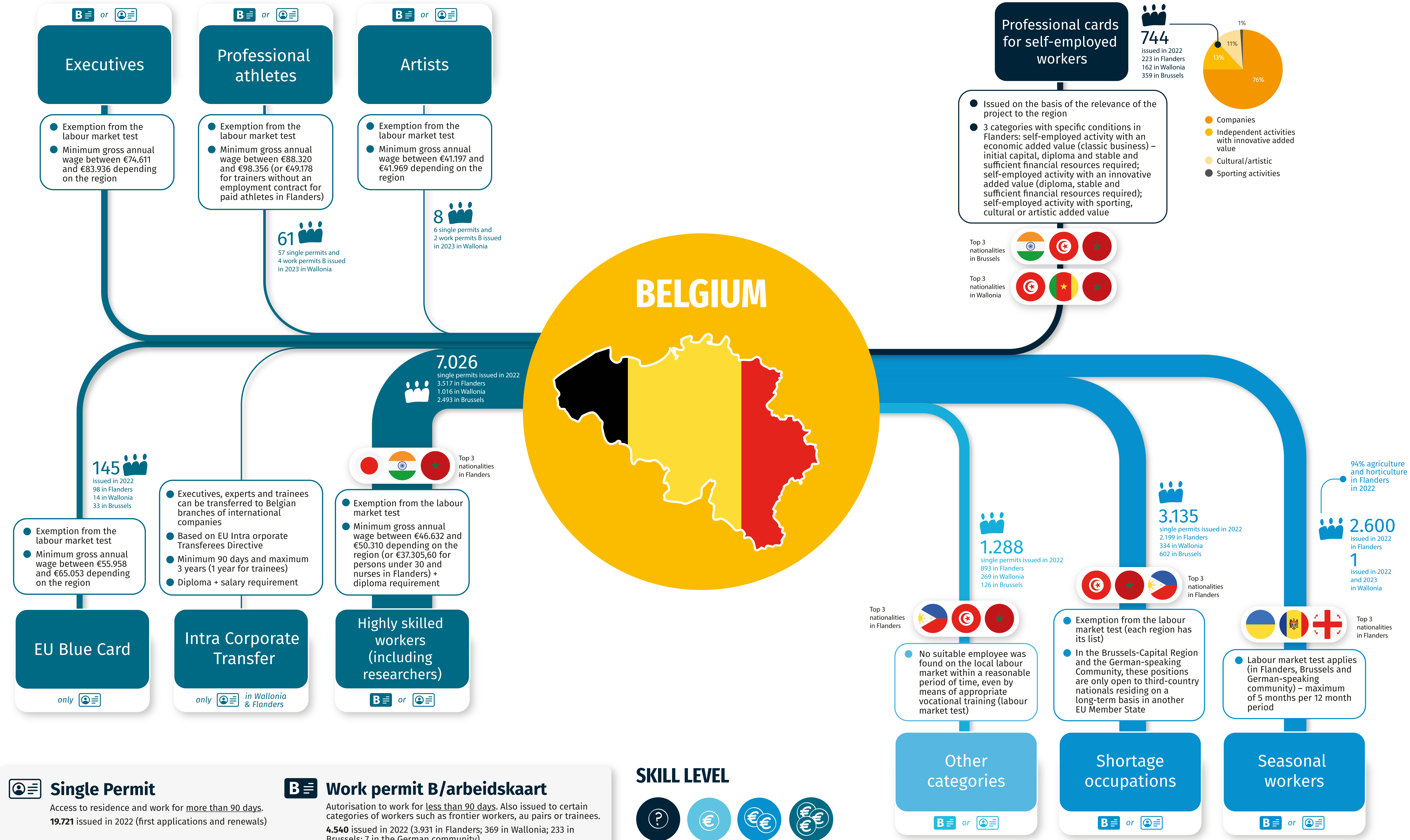


# LABOUR MIGRATION & MOBILITY PATHWAYS TOWARDS...



**Single Permit**  
 Access to residence and work for more than 90 days.  
**19.721** issued in 2022 (first applications and renewals)

**Work permit B/arbeidskaart**  
 Authorisation to work for less than 90 days. Also issued to certain categories of workers such as frontier workers, au pairs or trainees.  
**4.540** issued in 2022 (3.931 in Flanders; 369 in Wallonia; 233 in Brussels; 7 in the German community)

**SKILL LEVEL**

Various skill levels   Lower-skilled   Mid/Lower-skilled   High-skilled