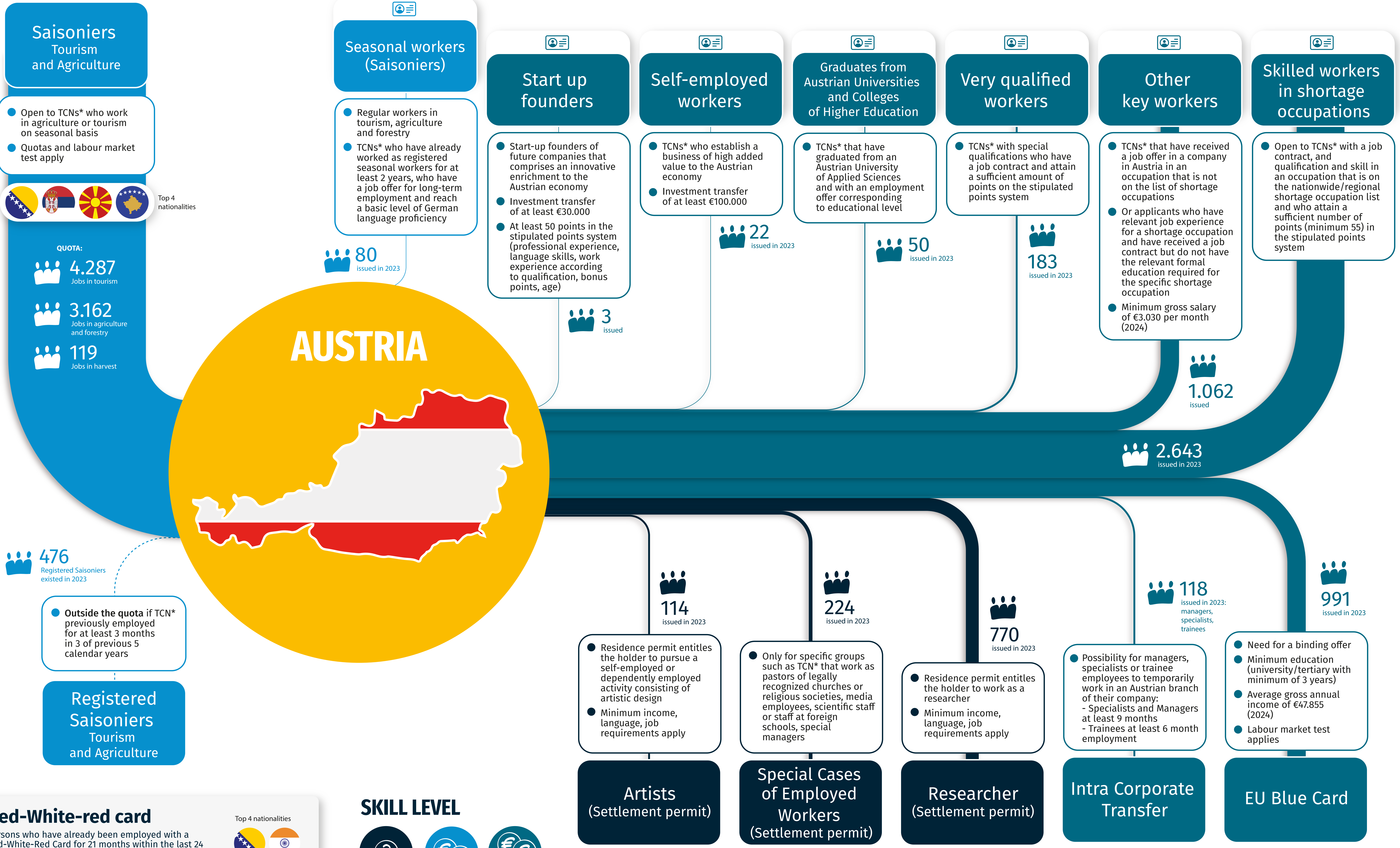


LABOUR MIGRATION & MOBILITY PATHWAYS TOWARDS...



Red-White-red card

Persons who have already been employed with a Red-White-Red Card for 21 months within the last 24 months can also apply for a Red-White-Red Card plus.

Top 4 sectors/professions: IT, Directors/Managers, Health professionals, Chef/Chef assistants

Top 4 nationalities: 🇧🇾 🇮🇳 🇷🇺 🇹🇷

SKILL LEVEL

Various skill levels
 Mid/Lower-skilled
 High-skilled

*TCN = third-country national